



LED Streetlight

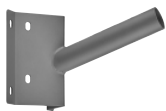
- Up to 60% energy saving compared to HID streetlight
- High efficacy up to 125 lm/W
- Low glare & precise optical design
- Accessories available for many pole types
- 6m extension cable available
- IP65 and suitable for use on the coast



Specifications

Item Code	Item Description	Equivalent to (W)	Power (W)	Lumen	Efficacy (lm/W)	CCT (K)	Weight (kg/pc)
140065922	LEDStreetlight 20W-4000K-SE	HID 50W	20	2500	125	4000	1.25
140066385	LEDStreetlight 40W-4000K-SE	HID 70W	40	4600	115	4000	1.25
543014002700	LEDStreetlight 65W-4000K-SE	HID 100W	65	7475	115	4000	1.25

Accessories



543098001100
LEDStreet-SE-Wall-Bracket



543098000800
LEDStreet-SE-Adapter-60



543098001000
LEDStreet-SE-Pole-Top-Adapter-60



543098000900
LEDStreet-SE-Pole-Top-Adapter-76



599000004600
LEDStreet-SE-ExtensionCable

Technical Specifications

Lifespan (L70B50)	70,000 h
Lifespan (L80B50)	50,000 h
On-/Off-cycles	100,000
Colour consistency (SDCM)	6
Dimmable	No
Beam angle	150 ° x 70 °
Finishing	Grey RAL 870-3
Colour rendering index CRI	≥ 80
Degree of protection (IP)	IP65
Impact strength	IK08
Protection class	I
Control gear included	Yes
Glow wire test	650 °C
Driver failure rate (at 5,000 hrs)	1 %
Power factor	0.95
Surge protection	4 kV

Electrical Supply

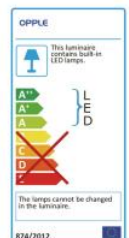
Frequency	50/60 Hz
Nominal voltage	220-240 V AC
DC input voltage	No

Mechanical Properties

Material housing	Aluminium
Optical material	Polycarbonate
Compatible pole Ø	36-42 mm
Effective wind area	385 cm ²

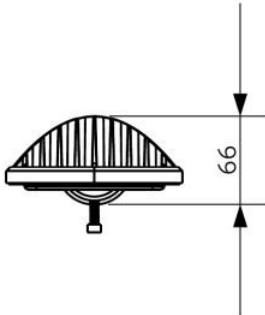
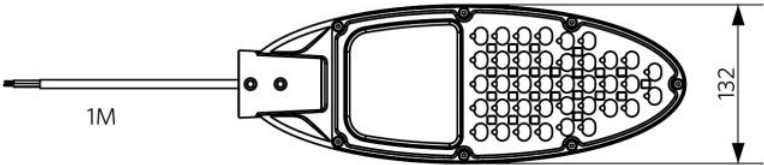
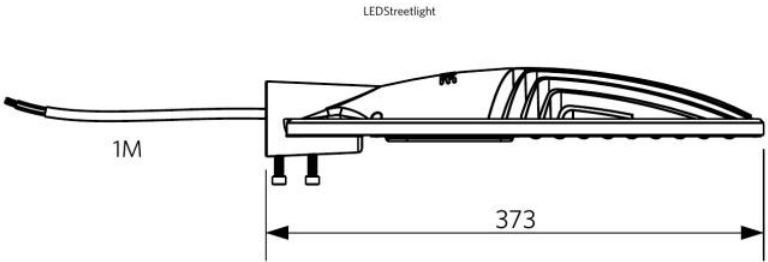
Ambient Conditions

Operating temperature	-40 ~ 50 °C
Application temperature	25 °C
Storage environment	-30 ~ 65 °C

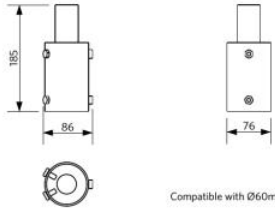


Dimensional Drawing (mm)

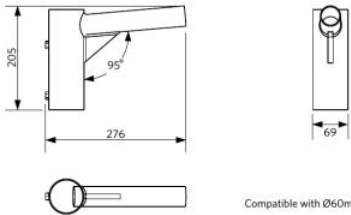
LEDStreetlight



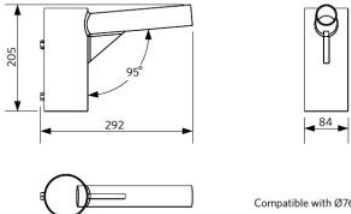
LEDStreetlight Adapter 60



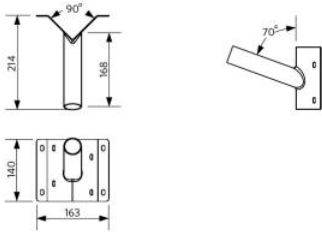
LEDStreetlight Pole Top Adapter 60



LEDStreetlight Pole Top Adapter 76



LEDStreetlight Wall Bracket



LEDStreet-SE-ExtensionCable

